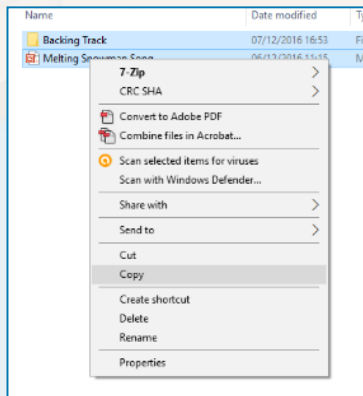
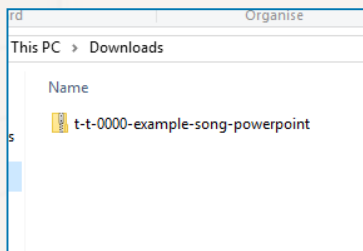
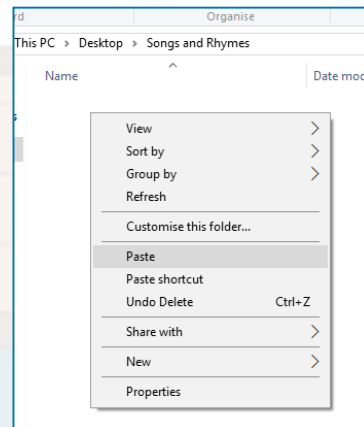


Guidance for Video/Audio in PowerPoints

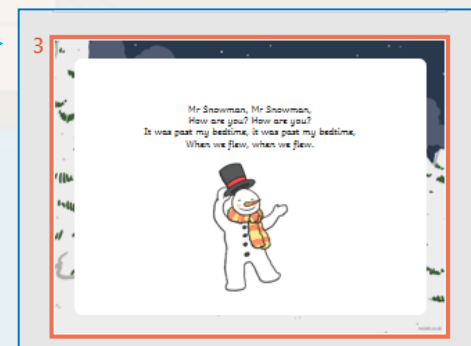
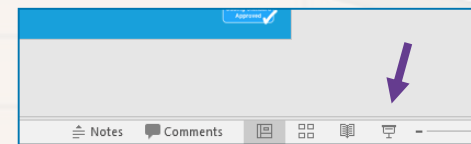
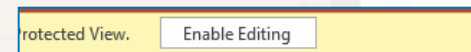
1. Open the folder and copy all the files.



2. Paste the copied files into a new folder.



3. Open the PowerPoint file, enable editing and enter presentation mode (start the slide show).



Please note the embedded audio may not be compatible with early versions of PowerPoint.

You may wish to delete this slide before beginning the presentation.



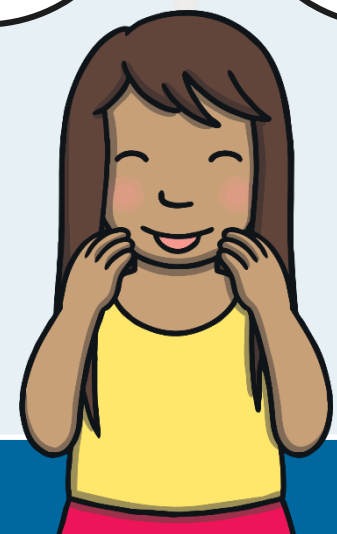
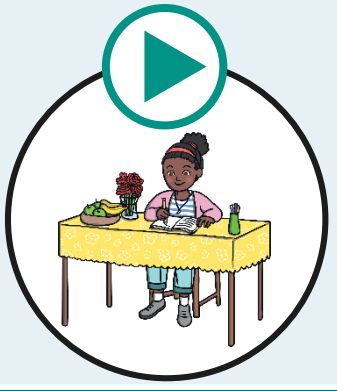
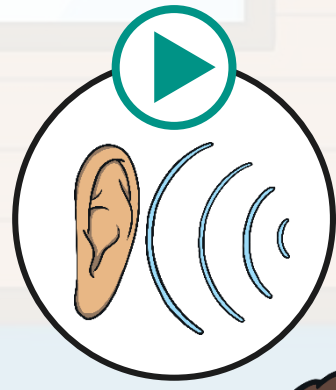
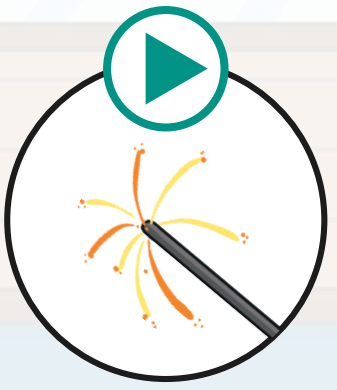
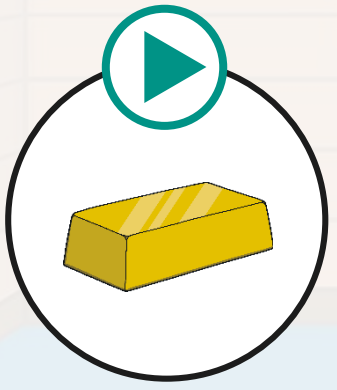
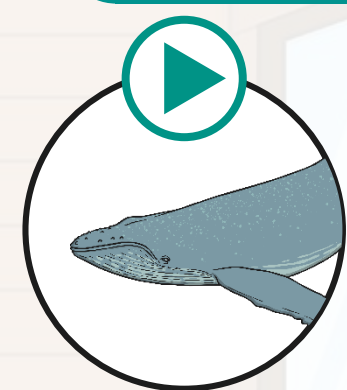
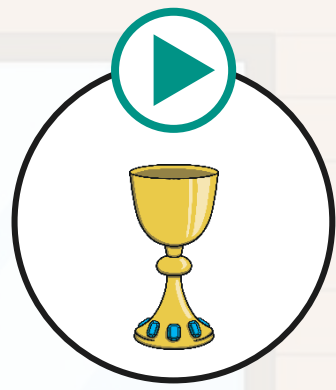
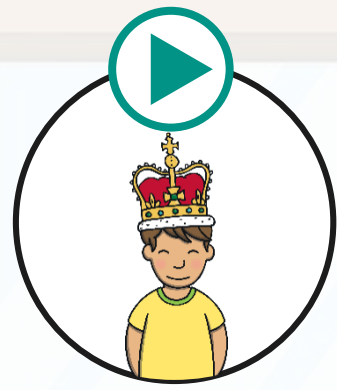
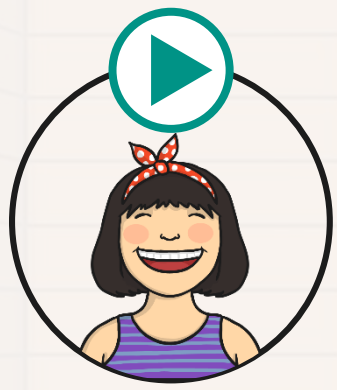
mb saying /m/ Shackleton's Expedition



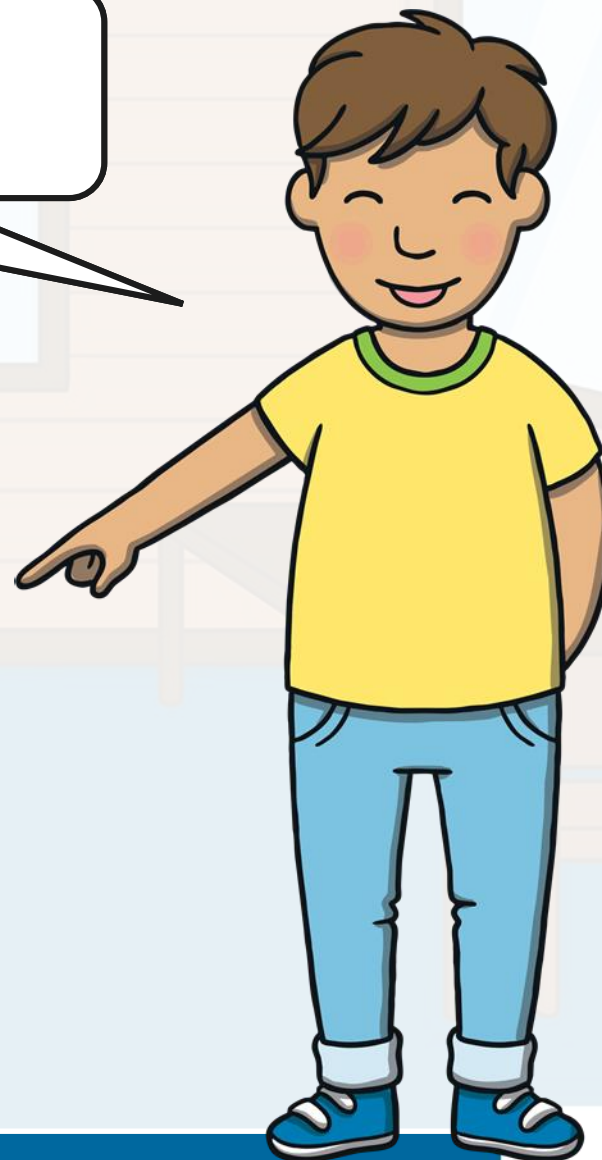


I'll say them and you write them down!

Revisit and Review



Watch the magic pencil write the words.
Can you join in?



famous

Play



Teach

shoe

Play



Today, we are learning to read words containing
mb saying /m/.





It was a Beavers club night and Kit, Dan and Jake were looking at a book together while they waited for Sana to start the lesson.

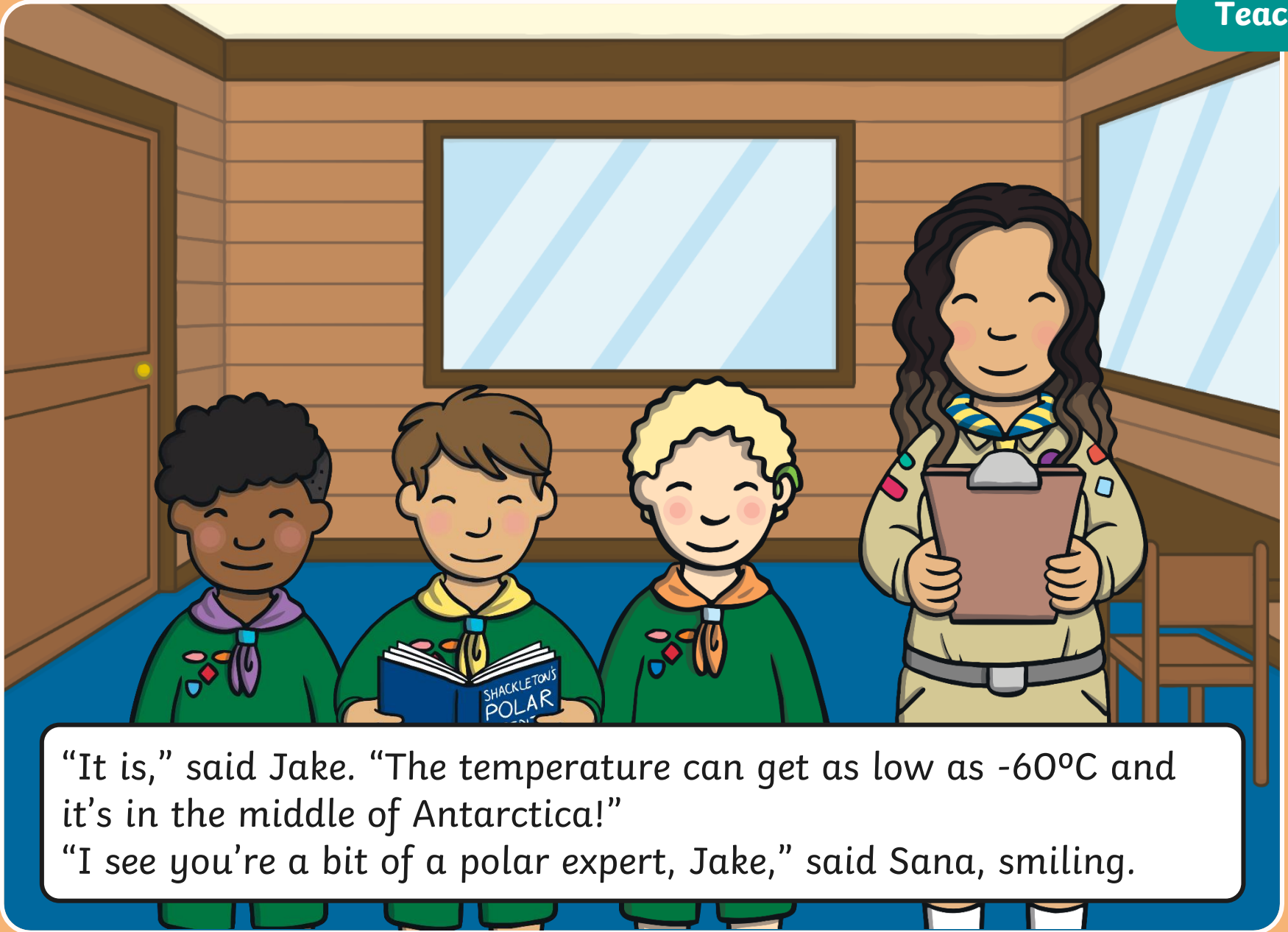


“What is your book about, boys?” asked Sana.

“It is about a famous explorer called Ernest Shackleton,” explained Kit. “He led an expedition to find the South Pole.”



“Ah yes, I’ve read about him too,” said Sana. “Brr! I don’t fancy the idea of the South Pole myself. It sounds a bit chilly.”



“It is,” said Jake. “The temperature can get as low as -60°C and it’s in the middle of Antarctica!”

“I see you’re a bit of a polar expert, Jake,” said Sana, smiling.

The spelling pattern **mb** saying /m/ usually appears at the end of a word.

lamb

comb

The root of this spelling pattern is historical, from Old English.

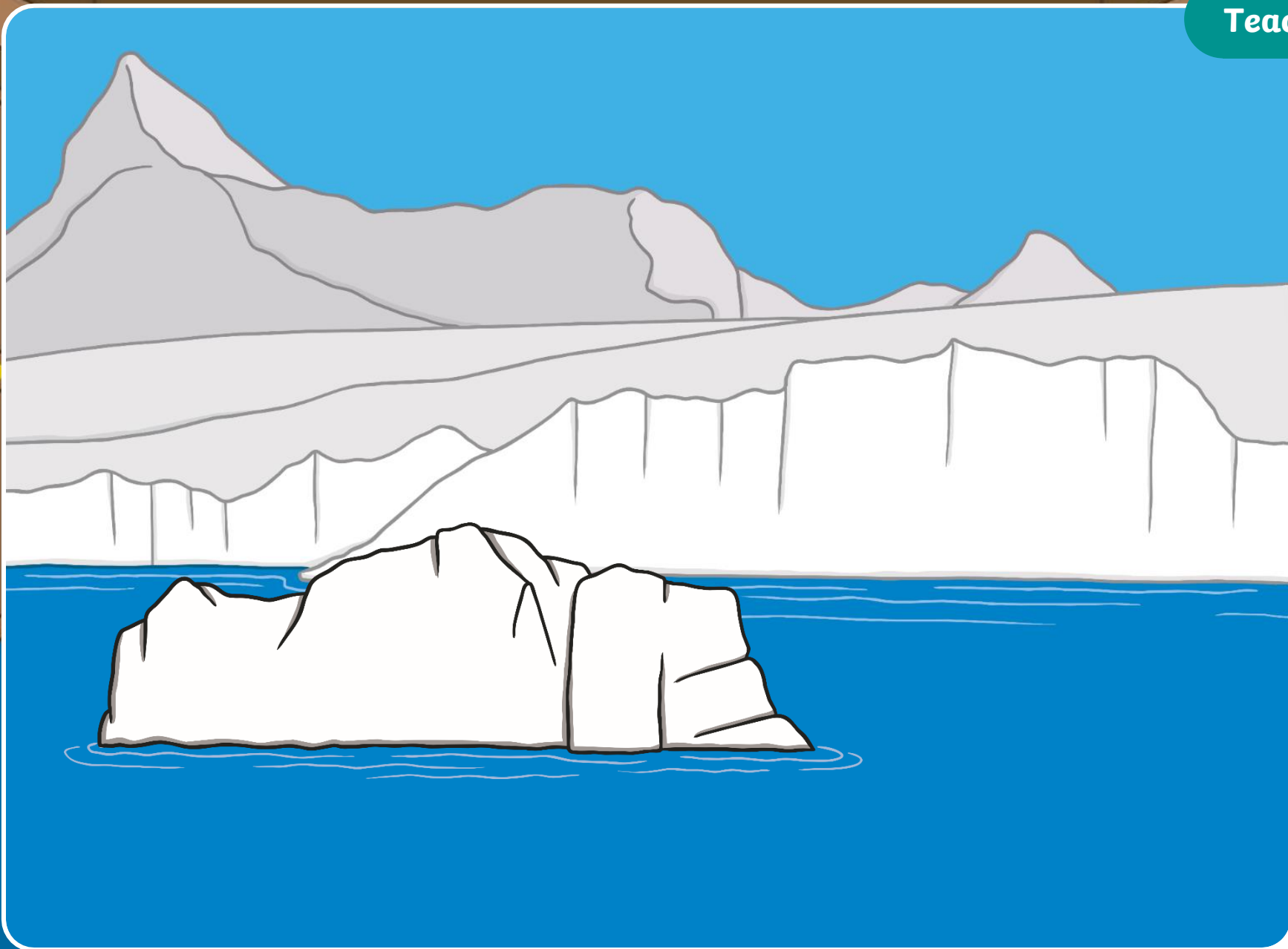
X

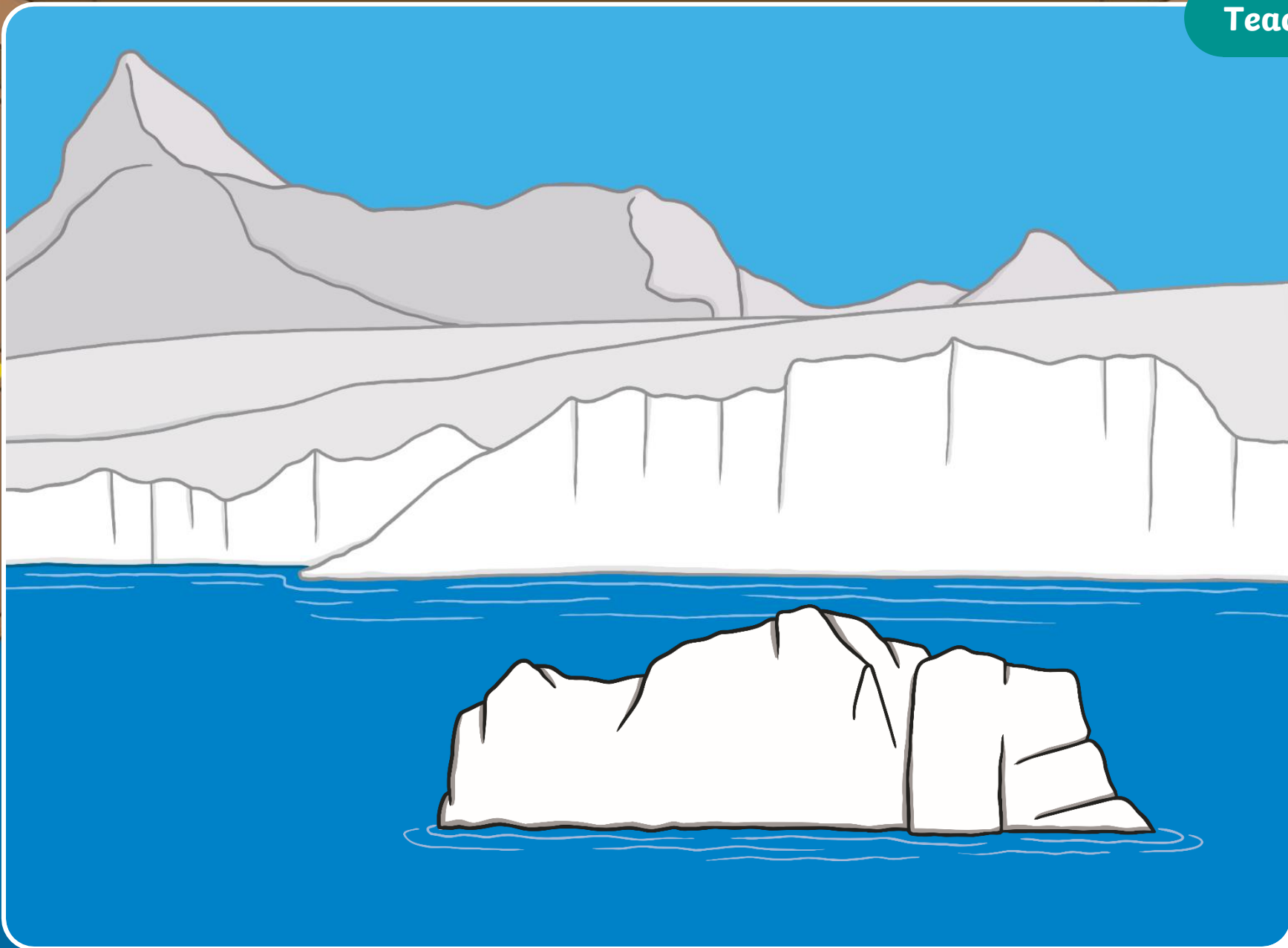


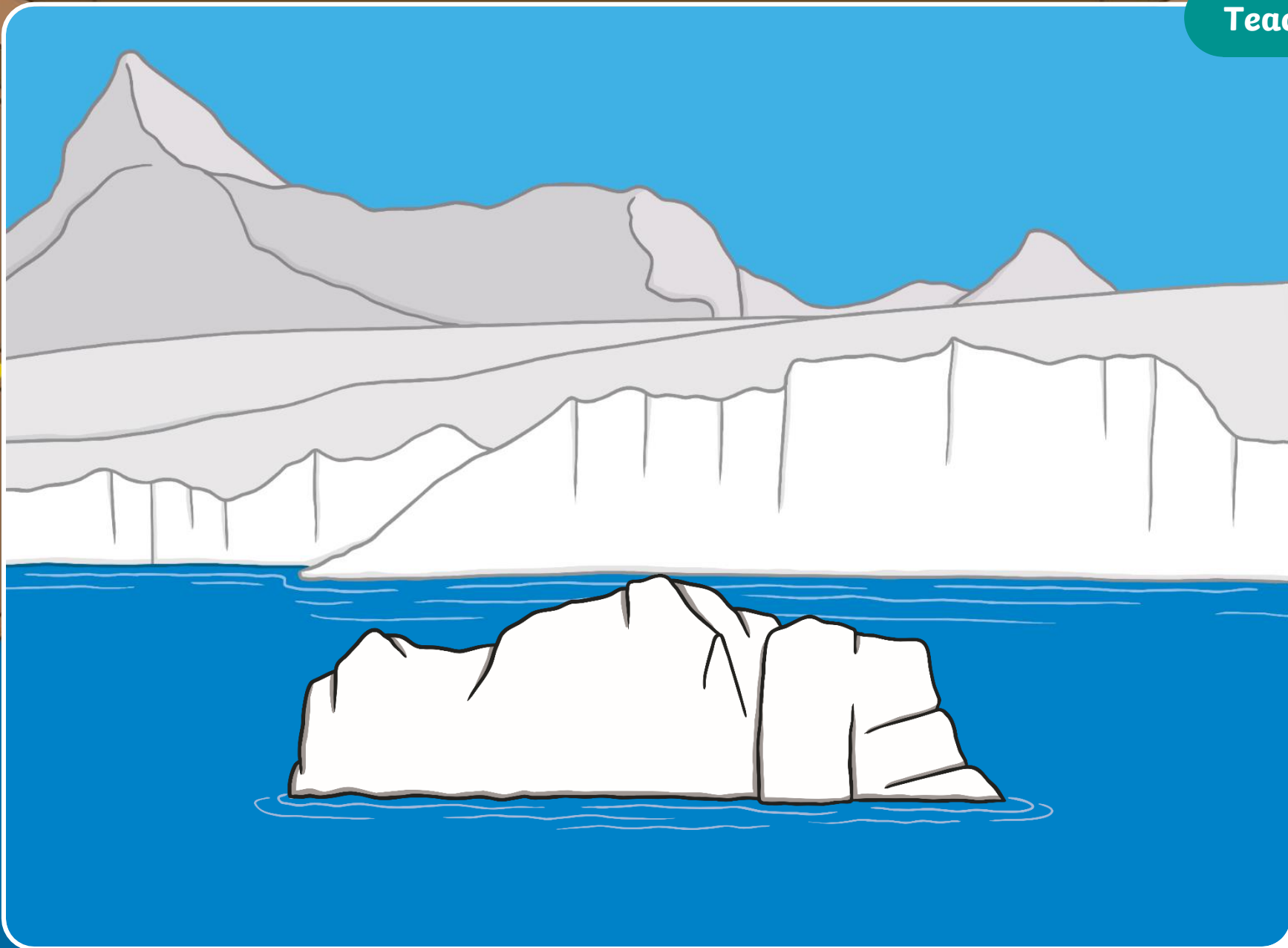
Click me for Kit's teaching tips!

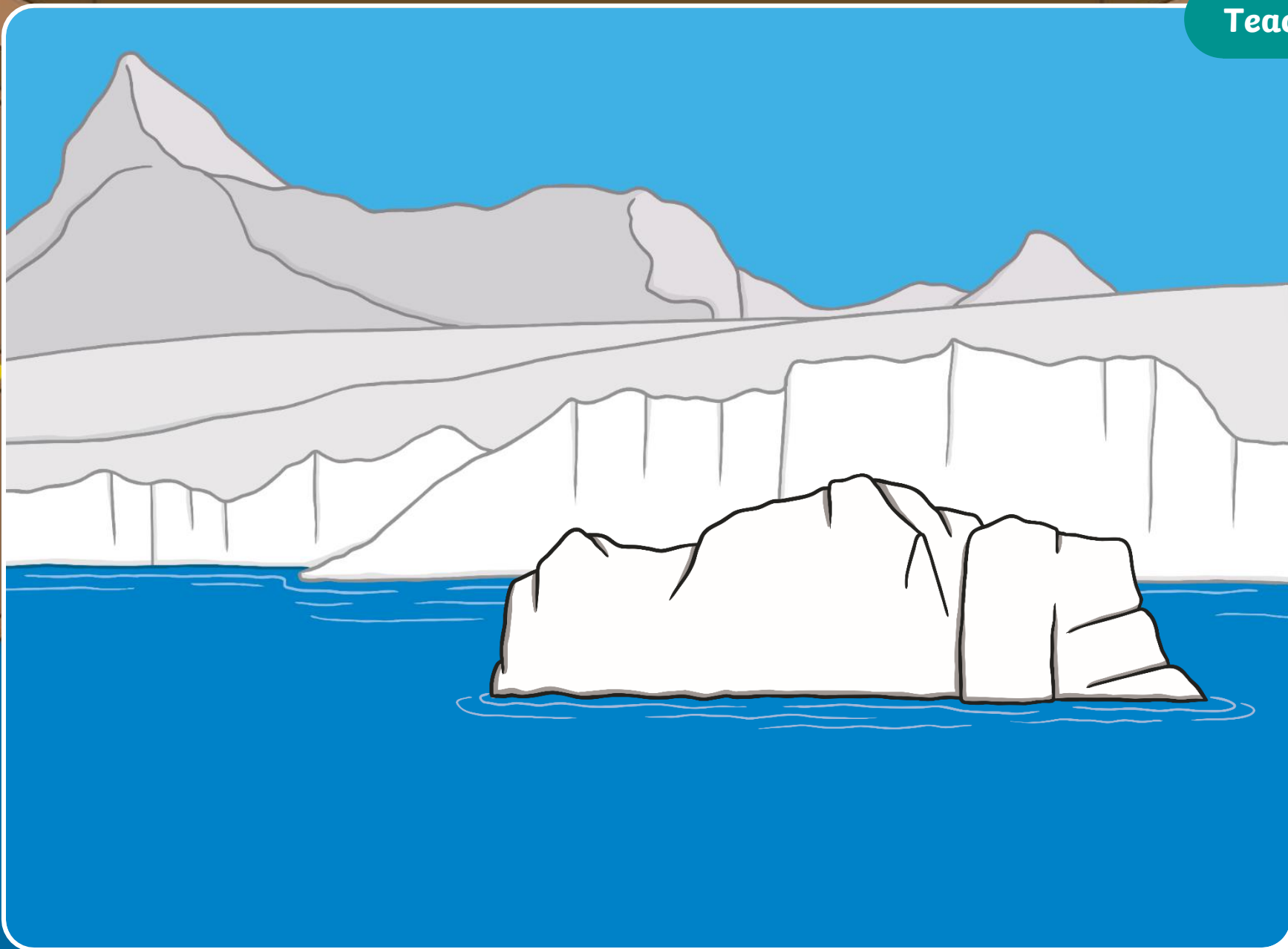
Kit, Jake and Dan are looking at pictures of the South Pole. Click on the icebergs to reveal a word containing **mb** to read.

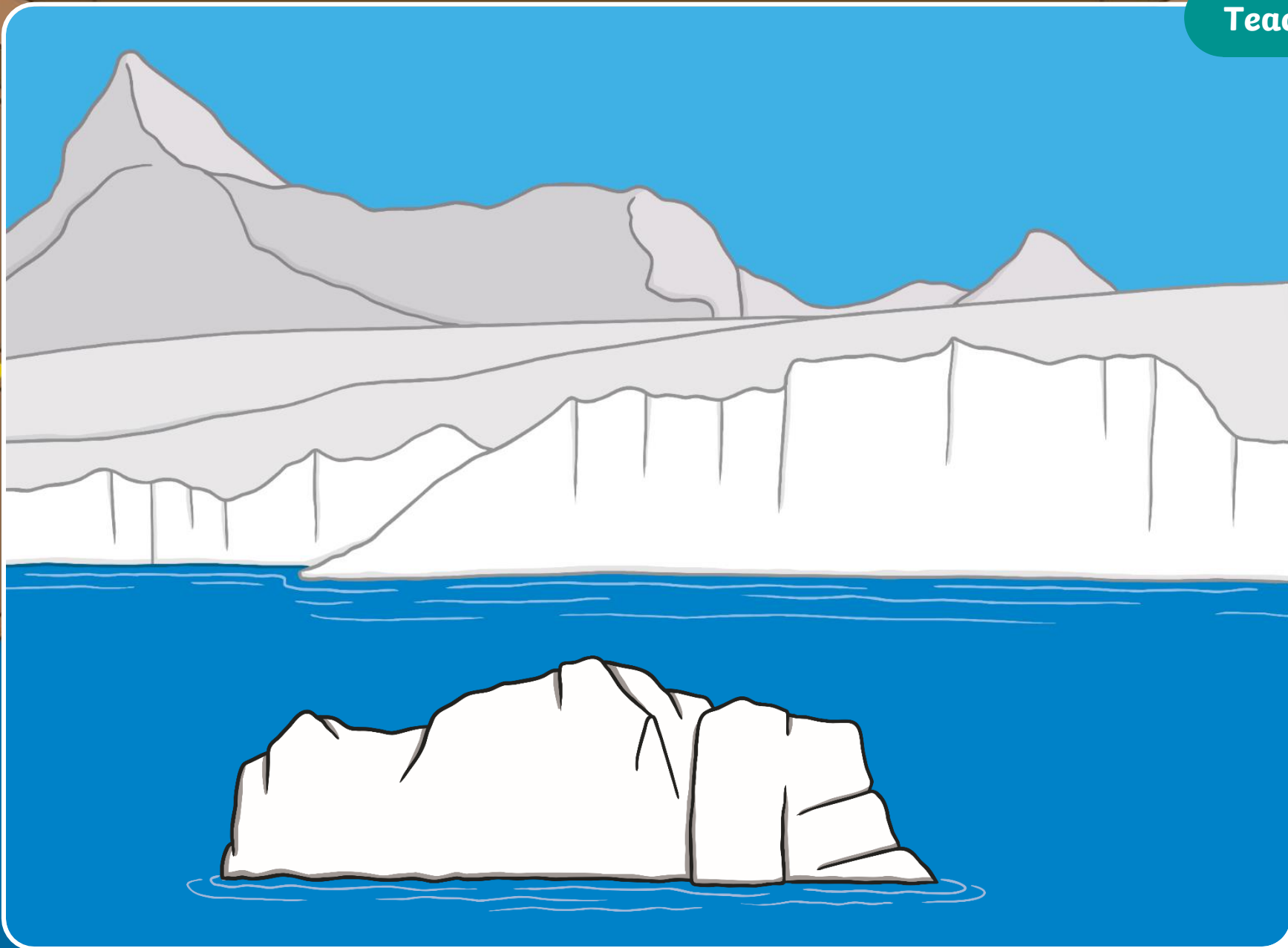


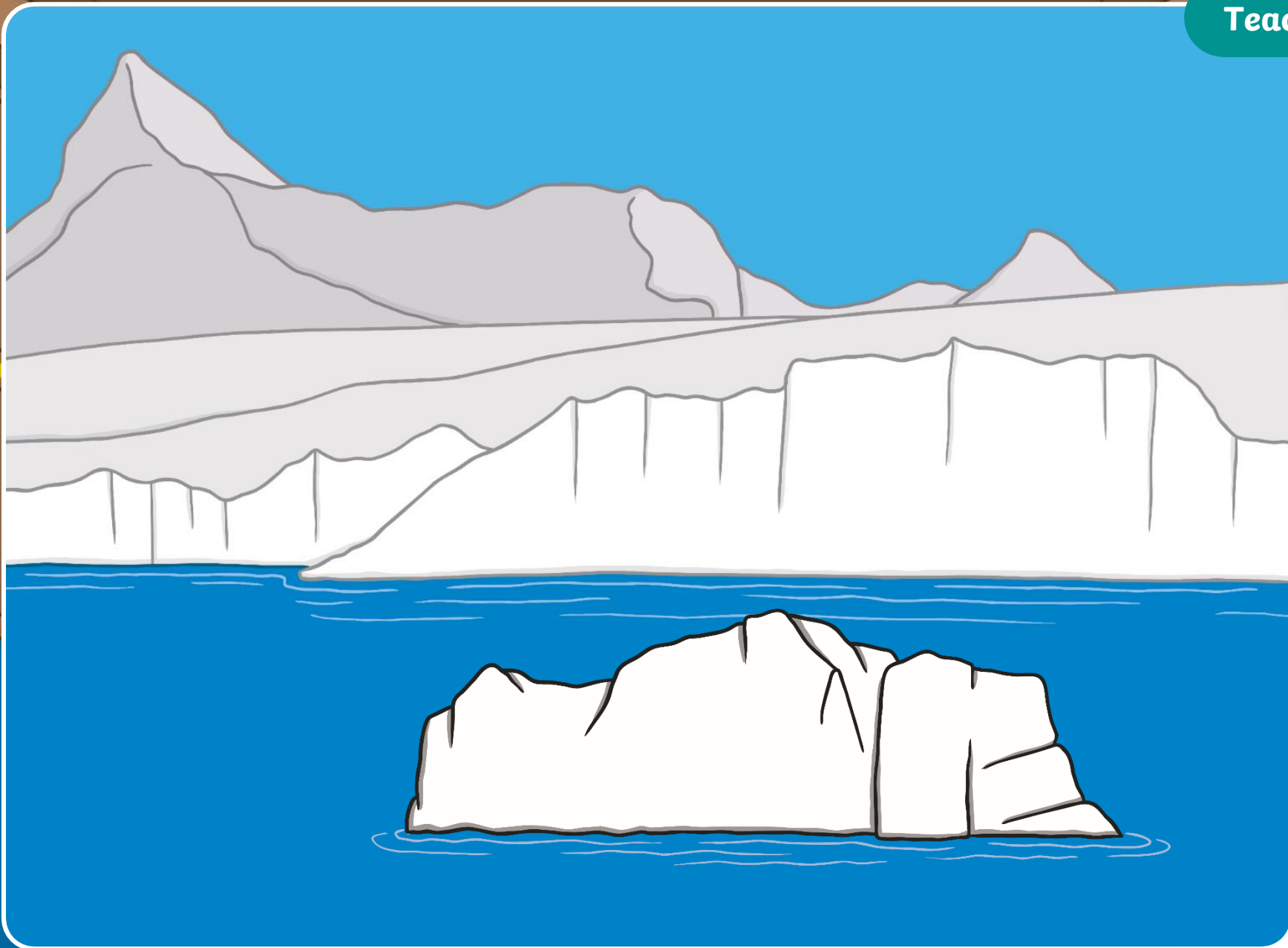


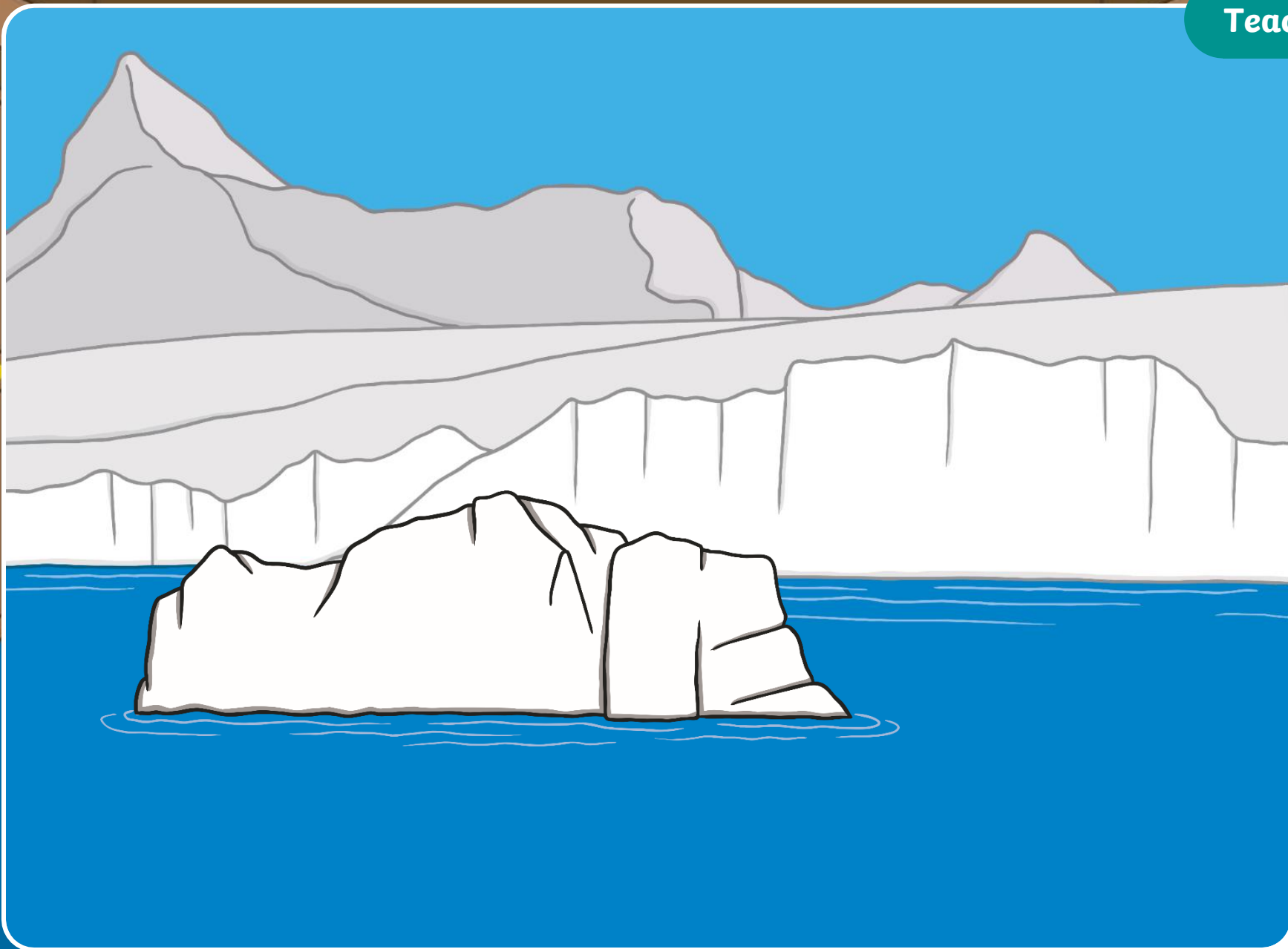


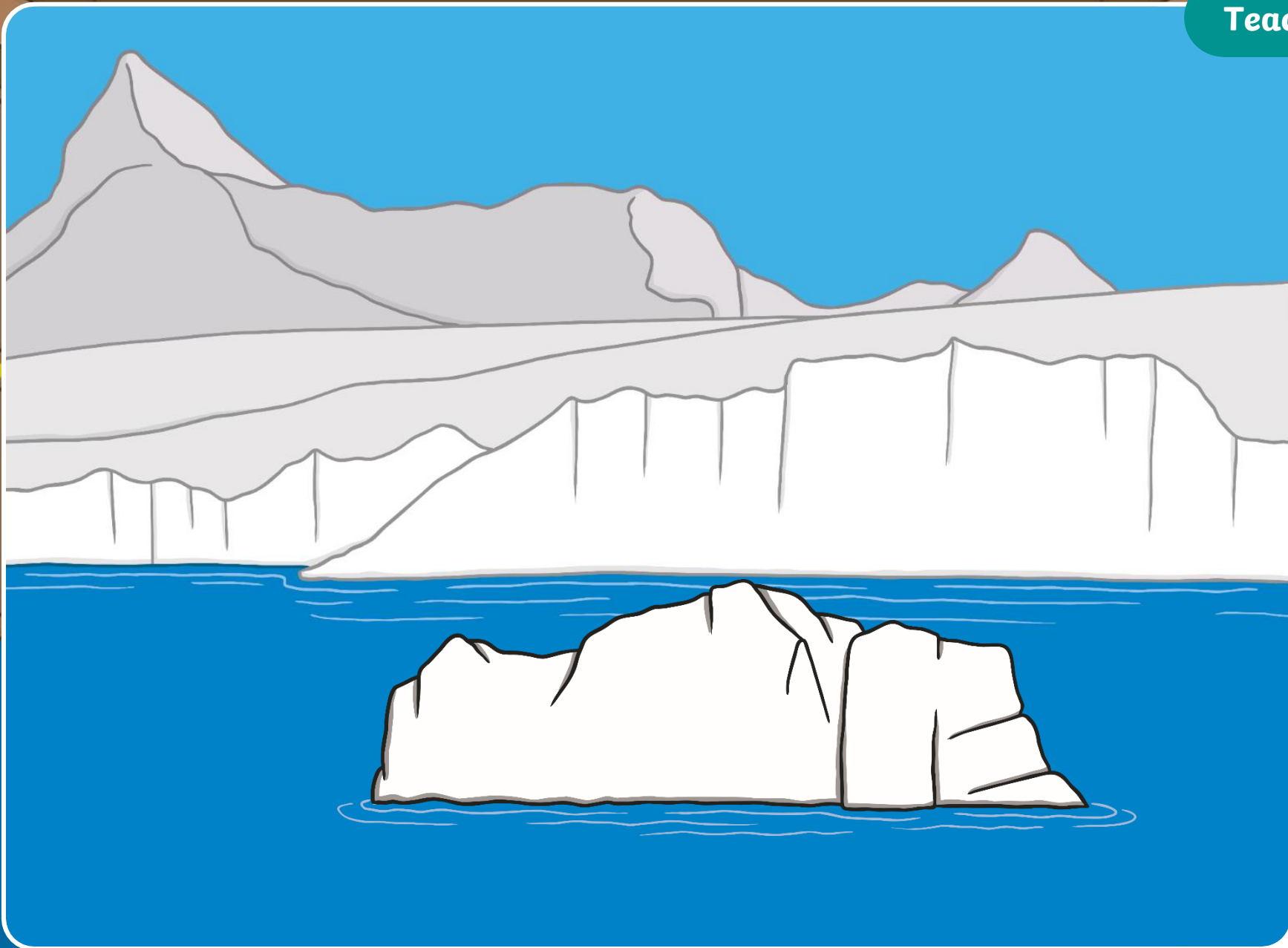






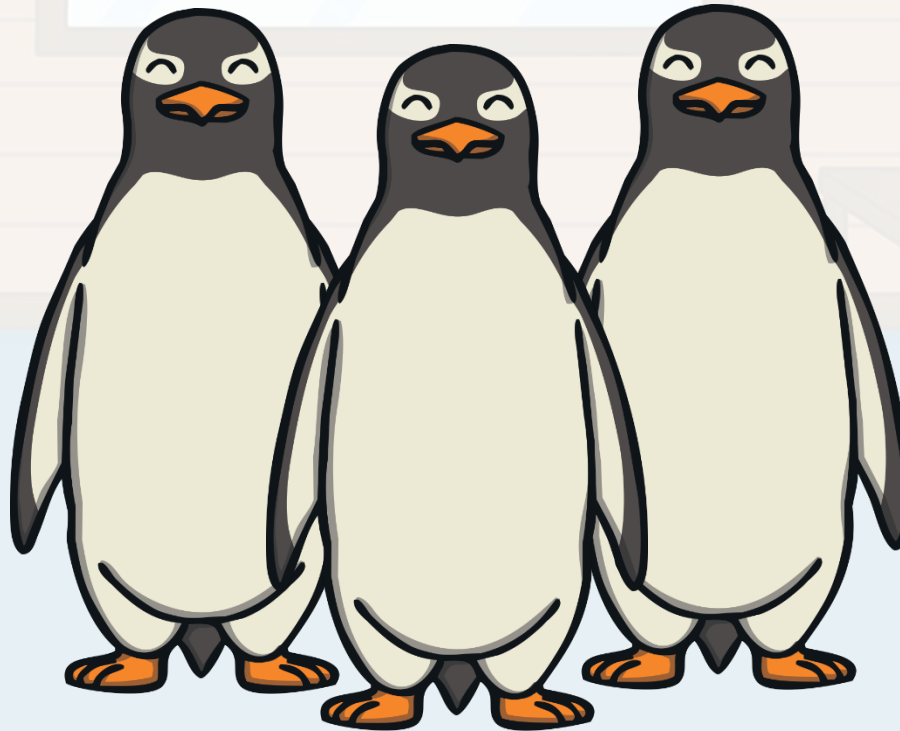


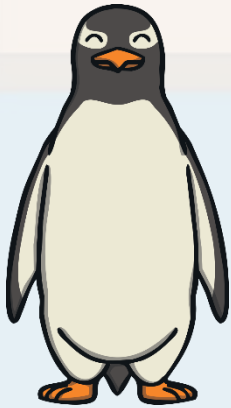




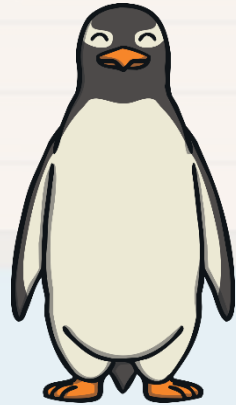
Marching Penguins

The boys discover that penguins live at the South Pole. Match the picture to the correct penguin.

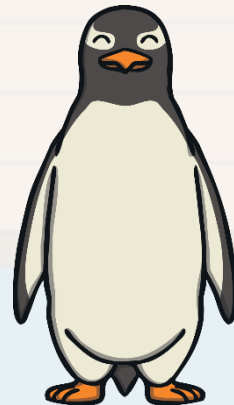




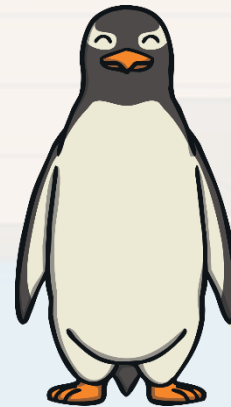
comb



lamb



crumbs



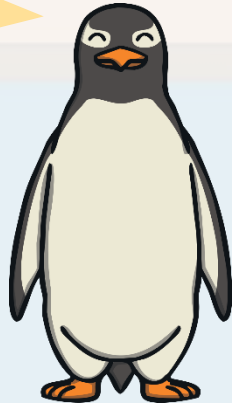
thumb



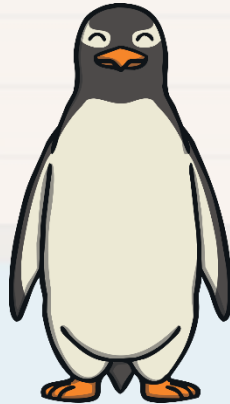
climb



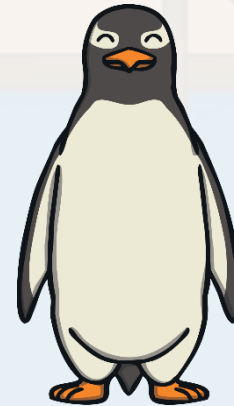
thumb



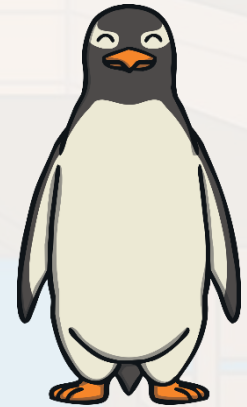
climb



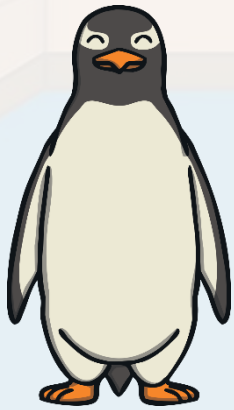
lamb



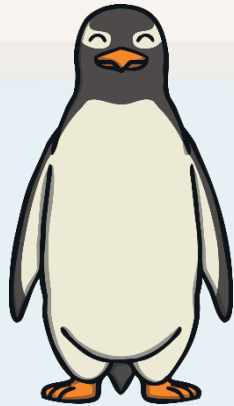
comb



crumbs



comb



climb



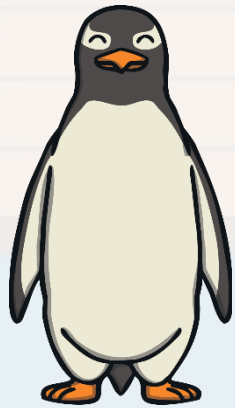
thumb



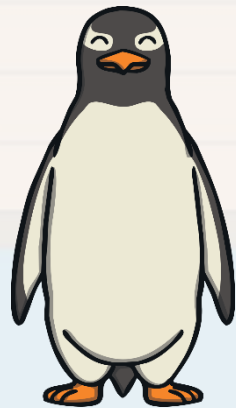
lamb



crumbs



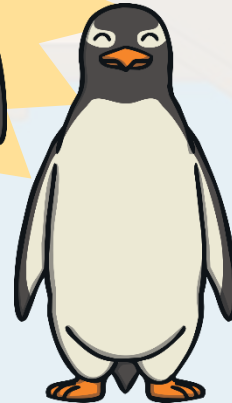
crumbs



thumb



comb



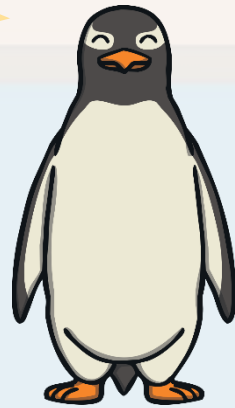
climb



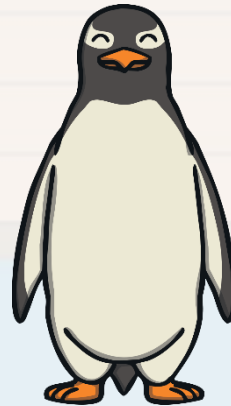
lamb



crumbs



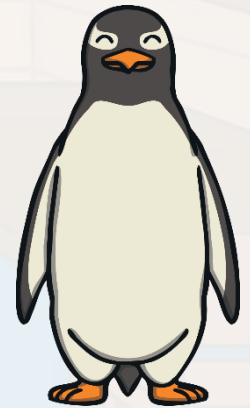
climb



comb



lamb



thumb

Text Detectives

The boys are quickly finishing their book. Can you spot any words containing **mb** on the pages?



Ernest Shackleton went to explore Antarctica. Antarctica is very cold and there is lots of snow. He combed the land to find the South Pole. Shackleton had to cross the ice and climb over windswept mountains to reach the Pole. The animals he saw there were very different from where he was born in Ireland.

There were no sheep or lambs but plenty of interesting birds! Despite the cold numbing his limbs, Shackleton pressed on and came very close to the Pole. Sadly, he became ill and was scared of getting frostbite on his thumbs. He decided to return home.

Check





“So, Shackleton didn’t make it to the South Pole!” said Jake, looking disappointed.

“No,” said Kit, with a glint in his eye. “He didn’t but do you think that we could?”

Today, we have learnt...



mb

saying /m/

The adventure continues next lesson!

